

opto™

SHOWER BY FETHERS

Dear Customer,

We have great pleasure in introducing the new
OPTO Frameless Sliding Shower System

OPTO represents the latest evolution in frameless shower enclosures. Combining practical sliding door simplicity with the elegant sophistication of exposed stainless steel, OPTO delivers an exceptional frameless shower solution.

OPTO offers an extensive list of features and benefits including...

- **Freedom of Design** - OPTO comes in three standard configurations (OPTO Inline, OPTO Square and OPTO Trio) to suit a multitude of bathroom layouts.
- **Adaptability** - OPTO's standard shower kit is quickly and easily adaptable to slide from either left or right without the need for customisation.
- **Capacity** - Doors can weigh up to 45kgs in either 8mm or 10mm toughened glass.
- **Functionality** - OPTO's sliding door function facilitates optimum use of space, even in the most confined bathrooms environments.
- **Convenience** - OPTO comes neatly and conveniently packaged in kit form preventing the likelihood of parts being lost or misplaced.
- **Installation Friendly** - OPTO has been designed with installers in mind. The simple bolt together construction facilitates fast and easy installation. Simply cut the rail to size and bolt the screen together.
- **Ease of Operation** - OPTO's sliding door function provides effortless operation.

See the enclosed documentation for further details and should you wish to enquire further, please do not hesitate to contact us toll free on 1800 099 918.

Kind regards,

The Team at Fethers.



opto™
inline



opto™
square

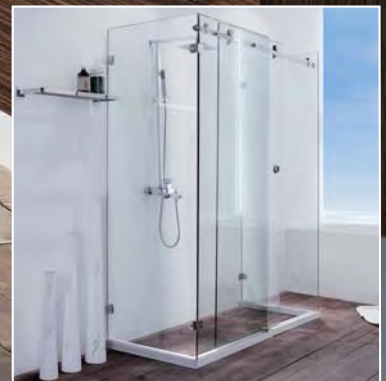


opto™
trio

opto™
SHOWER



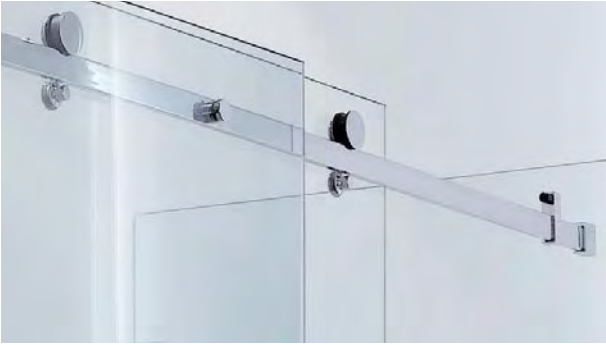
opto™
square



opto™
trio

opto™
inline

FETHERS FRAMELESS
the future in glass



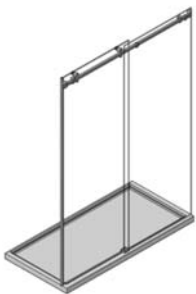
OPTO represents the latest evolution in frameless shower enclosures.

Combining practical sliding door simplicity with the elegant sophistication of exposed stainless steel, OPTO delivers an exceptional frameless shower solution.

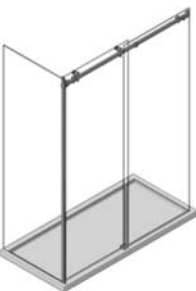
OPTO also offers maximum freedom of design. It can be easily constructed to open from either left or right without the need for customisation and the sliding door function facilitates optimum use of space in all bathroom environments.



Configurations



opto™
inline



opto™
square



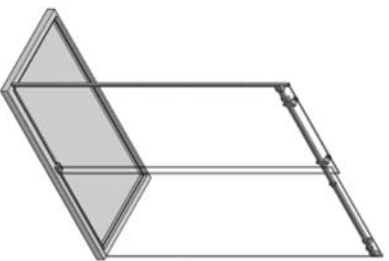
opto™
trio

Technical Information

- Manufactured in Architectural Grade 304 Stainless Steel
- Maximum standard door/sidelight dimensions of 1650mm
- Maximum weight of door 45kgs
- Suitable for 8mm and 10mm glass
- Available in polished and brushed stainless steel

Available from:

© Copyright 2010. This document & its contents including images, drawings & specification are the exclusive property of Fethers Glazing Systems Pty Ltd, & must not be copied. Unauthorised use may result in legal action. OPTO™ Shower is a trademark of Fethers Glazing Systems. Pty. Ltd.

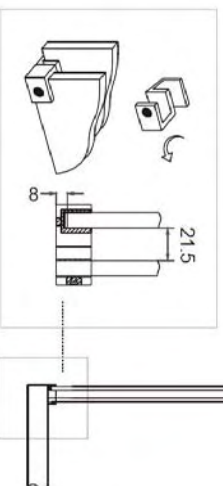
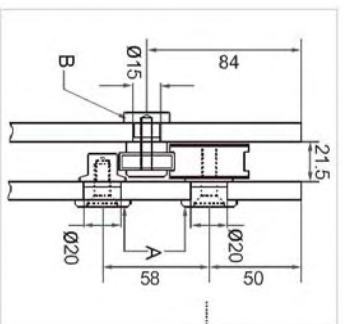
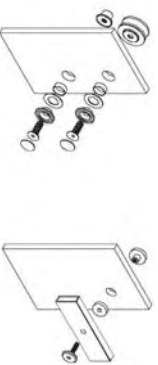


<p>OPT1 x 2 pieces</p>	<p>OPT2 x 2 pieces</p>	<p>OPT3 x 1 piece</p>	<p>OPT4 x 2 pieces</p>
<p>OPT5 x 2 pieces</p>	<p>OPT7 x 1 piece</p>		

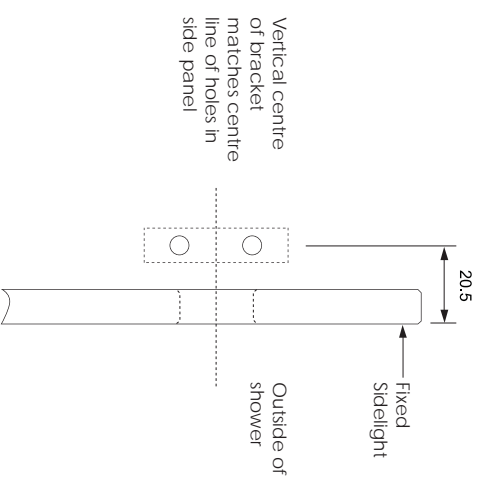
Installation Procedure

1. Fix Side Panel using preferred fixing method
2. Fix 2 x **OPT1** Brackets to wall (see diagram. 1)
3. Trim Rail to length (see diagram. 2)
4. Slide 2 x **OPT2** Door Stops onto Rail ensuring grub screws face outside of shower. (Note: Rubber Stop is reversible). Determine precise location for Door Stops and tighten into position.

Roller & Rail Assembly



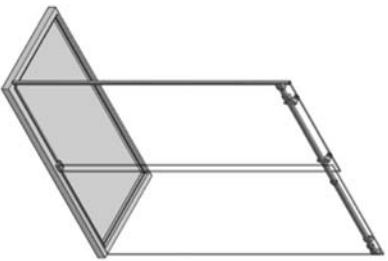
OPT1 Bracket Location (diagram. 1)



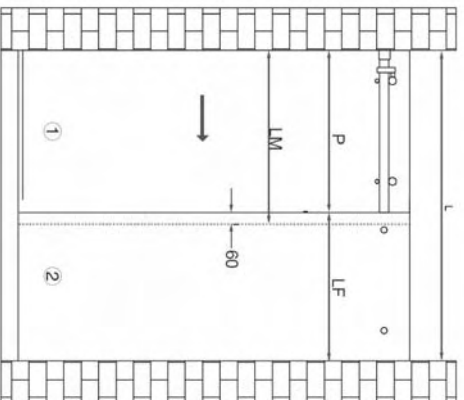
Rail Preparation (diagram. 2)



5. Fix Rail to Return, Side Panel and walls using **OPT5** Fixings and **OPT1** Sleeves
6. Fit **OPT4** Rollers to door and hang door on Rail
7. Fit **OPT4** Guides to door and adjust rollers and guides accordingly
8. Slide Door Stops into position and tighten as required
9. Fix **OPT3** Floor Guide



Glass Calculation



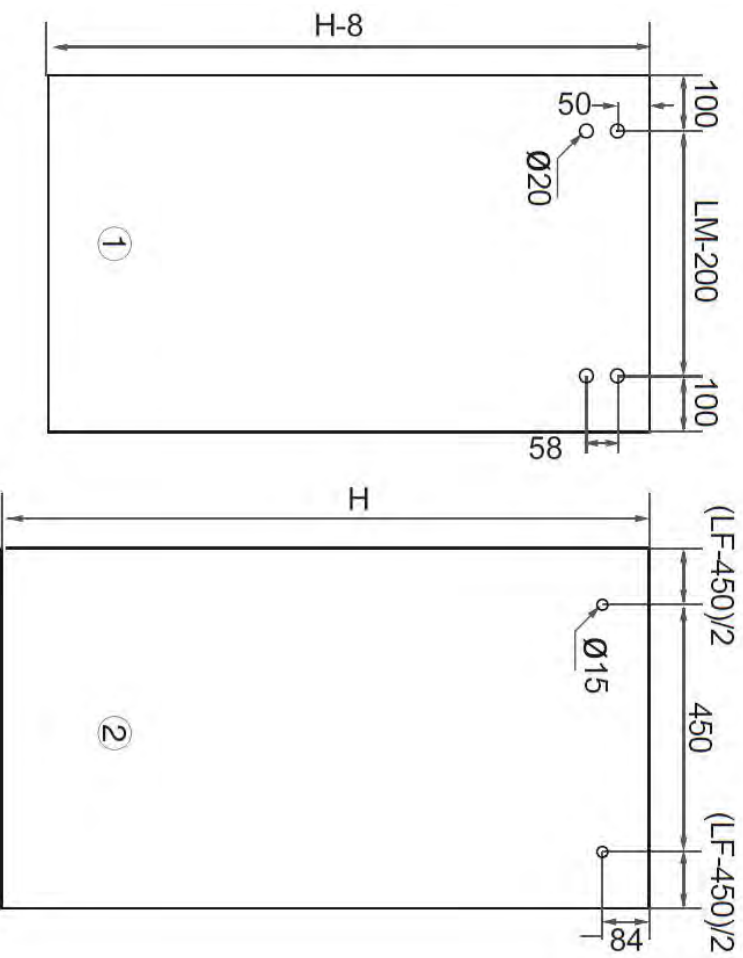
$$L = 1150 \text{ mm} - 1650 \text{ mm}$$

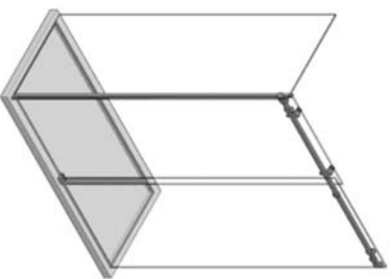
$$P = L/2$$


$$LM = P + 60\text{mm}$$

$$LF = L - P$$

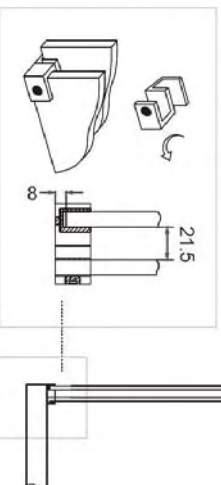
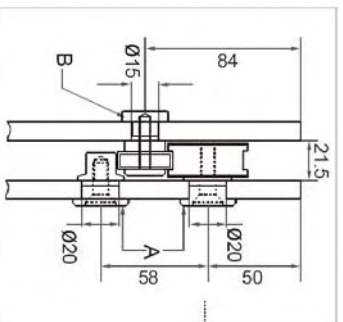
Glass Sizes



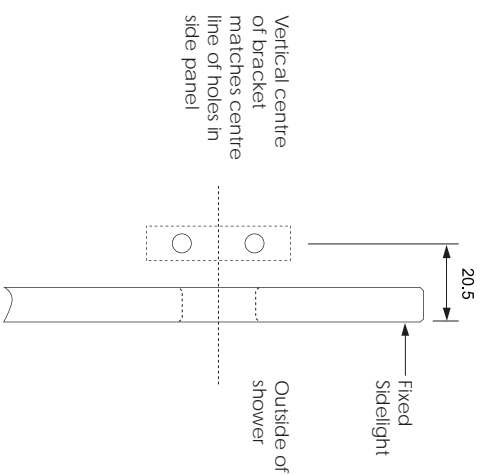


 OPT1 x 1 piece	 OPT2 x 2 pieces	 OPT3 x 1 piece	 OPT4 x 2 pieces
 OPT5 x 2 pieces	 OPT6 x 1 piece	 OPT7 x 1 piece	

Roller & Rail Assembly



OPT1 Bracket Location (diagram. 1)

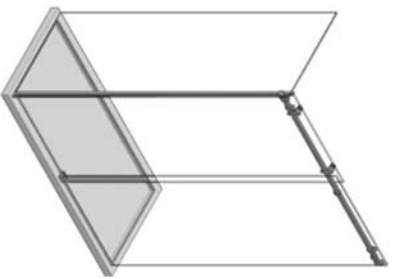


Rail Preparation (diagram. 2)

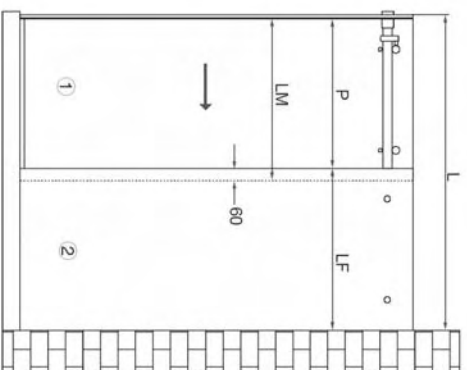


Installation Procedure

1. Fix Side and Return Panels using preferred fixing method
2. Attach **OPT6** Bracket to Return Panel
3. Attach **OPT1** Bracket to wall (see diagram. 1)
4. Trim Rail to length (see diagram. 2)
5. Slide 2 x **OPT2** Door Stops onto Rail ensuring grub screws face outside of shower. (Note: Rubber Stop is reversible). Determine precise location for Door Stops and tighten into position.
6. Fix Rail to Return Panel, Side Panel and wall using **OPT5** Fixings and **OPT1** Sleeves
7. Fit **OPT4** Rollers to door and hang door on Rail
8. Fit **OPT4** Guides to door and adjust rollers and guides accordingly
9. Slide Door Stops into position and tighten as required
10. Fix **OPT3** Floor Guide



Glass Calculation



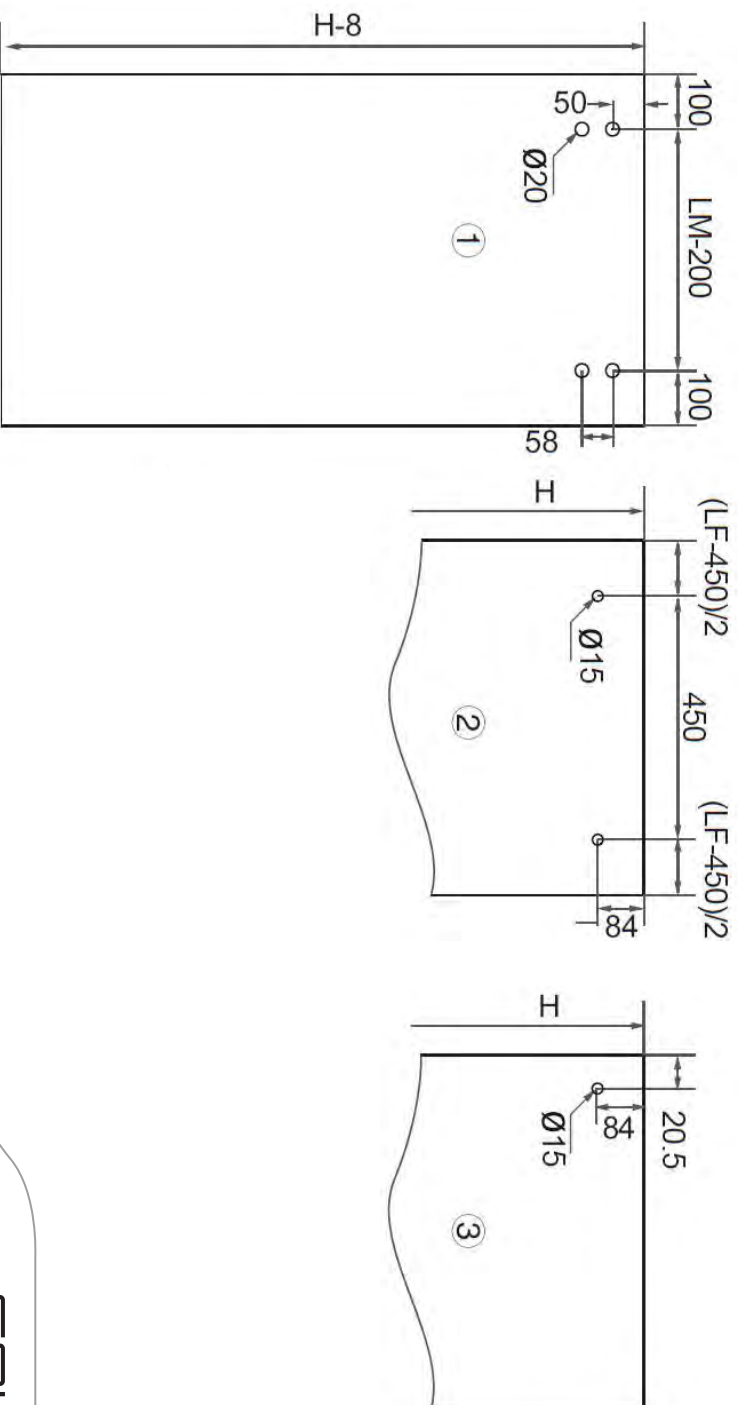
$$L = 1150 \text{ mm} - 1650 \text{ mm}$$

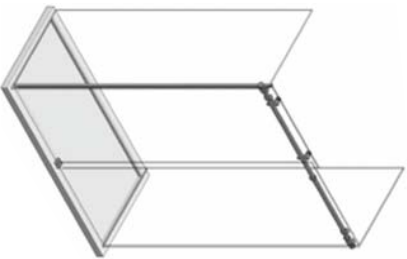
$$P = L/2$$

$$LM = P + 60\text{mm}$$

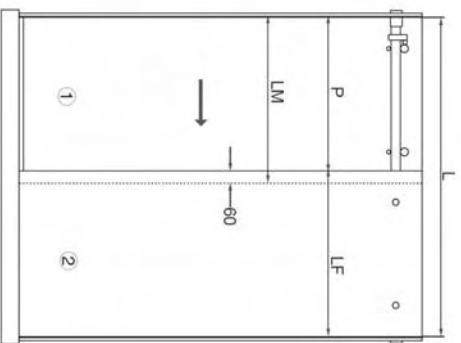
$$LF = L - P$$

Glass Sizes





Glass Calculation



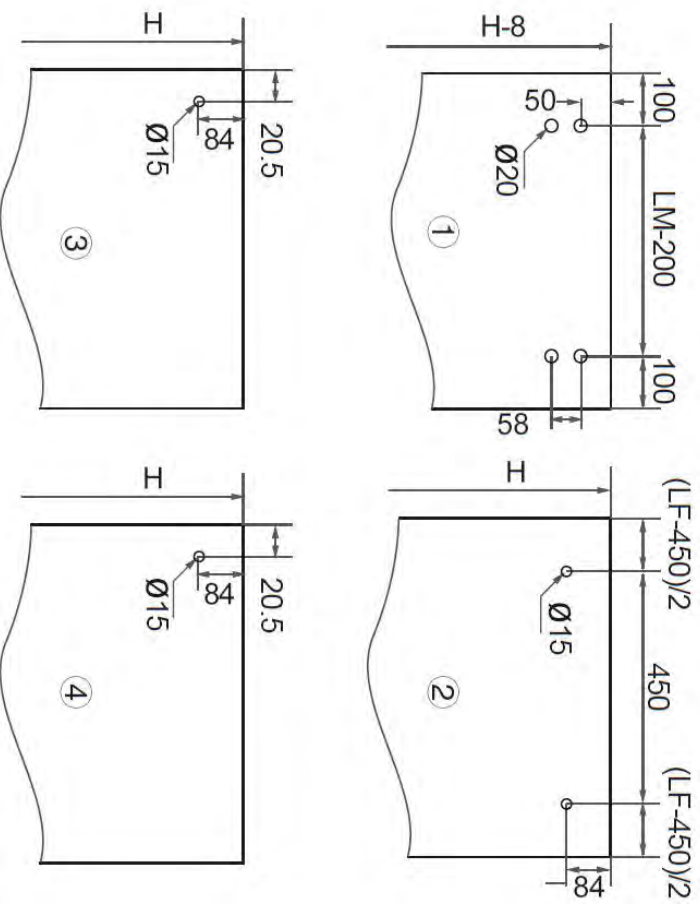
$$L = 1150 \text{ mm} - 1650 \text{ mm}$$

$$P = L/2$$

$$LM = P + 60\text{mm}$$

$$LF = L - P$$

Glass Sizes



opto™ SHOWER BY FETHERS

Keeping your OPTO Shower looking great

IMPORTANT PLEASE READ THIS DOCUMENT THOROUGHLY TO ENSURE OPTIMUM DURABILITY OF YOUR NEW OPTO SHOWER.

Your OPTO Shower has been manufactured from 304 Grade Architectural Stainless Steel. There are some common misconceptions about stainless steel that are important to clarify. Stainless steel is stain-less it is NOT stain proof. Stainless steel can stain, it can rust, it can mark and it can scratch. It can also look like new for a very long time, provided it is properly maintained.

As stainless steel is installed in a wide variety of applications, it is impossible to determine the exact maintenance program required in each application. The more aggressive the environment, the greater frequency of maintenance will be required.

Maintenance procedures

Maintenance of your OPTO Shower is no different to many other stainless steel products in the home except that greater frequency may be required to maintain its appearance, mainly due to the damper environment typically found in bathrooms.

Stainless steel will hold its appearance and remain free of staining if it is washed regularly with soap or a detergent containing low chloride. Ordinary household cleaners with low chloride applied with a soft cloth or brush should be used to avoid scratching the surface. It should always be dried afterwards to avoid leaving streaky marks.

There are many stainless steel cleaners available today in the retail market and most will be suitable for maintaining your OPTO Shower. Should you require further information or clarification, please do not hesitate to call us toll free on 1800 099 918.

We trust your new OPTO Shower meets with your expectations and we wish you many years of enjoyable use.

The Team at Fethers.



opto™
inline



opto™
square



opto™
trio